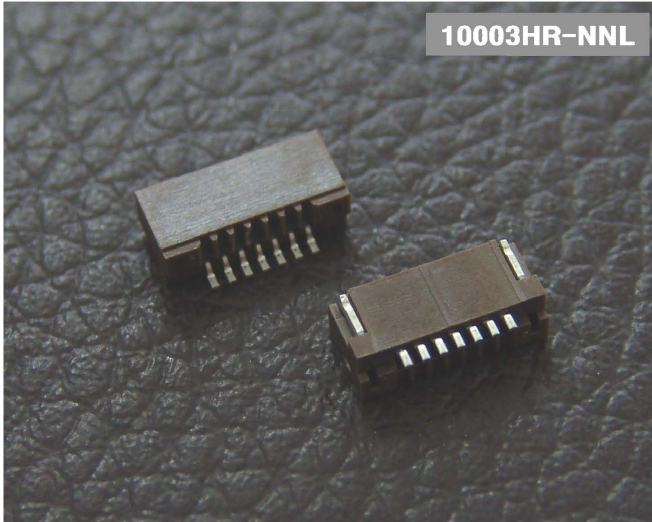


# 1.00mm

## (0.039") PITCH CONNECTOR



10003HR-NNL

### Material

I/NO	DESCRIPTION	MATERIAL
1	HOUSING	PPS
2	TERMINAL	Phosphor Bronze, Tin-plated
3	HOOK	Brass, Tin-plated

## FPC/FFC Connectors

### Housing

Emboss Type

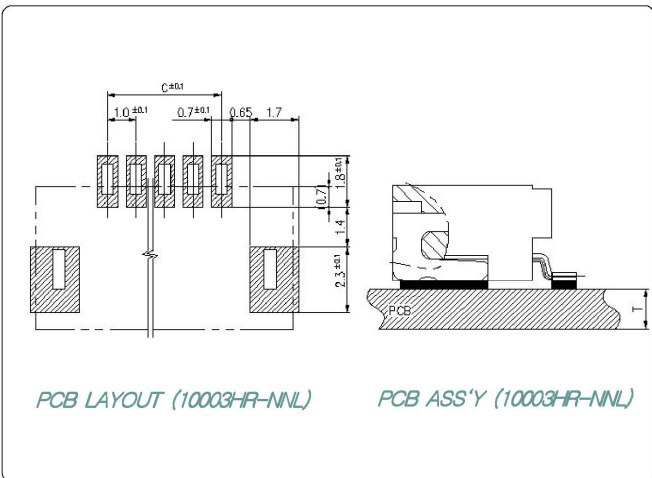
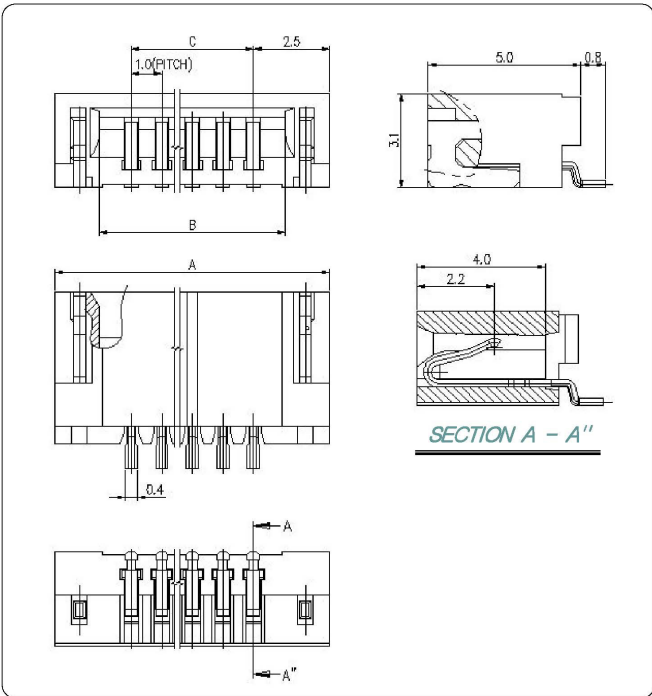
SMT Type

Non ZIF Type

Bottom Contact

### Available Pin

PARTS NO.	A	B	C
10003HR-03L	7.00	4.10	2.00
10003HR-04L	8.00	5.10	3.00
10003HR-05L	9.00	6.10	4.00
10003HR-06L	10.00	7.10	5.00
10003HR-07L	11.00	8.10	6.00
10003HR-08L	12.00	9.10	7.00
10003HR-09L	13.00	10.1	8.00
10003HR-10L	14.00	11.1	9.00
10003HR-11L	15.00	12.1	10.00
10003HR-12L	16.00	13.1	11.00
10003HR-13L	17.00	14.1	12.00
10003HR-14L	18.00	15.1	13.00
10003HR-15L	19.00	16.1	14.00
10003HR-16L	20.00	17.1	15.00
10003HR-17L	21.00	18.1	16.00
10003HR-18L	22.00	19.1	17.00
10003HR-19L	23.00	20.1	18.00
10003HR-20L	24.00	21.1	19.00
10003HR-21L	25.00	22.1	20.00
10003HR-22L	26.00	23.1	21.00
10003HR-23L	27.00	24.1	22.00
10003HR-24L	28.00	25.1	23.00
10003HR-25L	29.00	26.1	24.00
10003HR-26L	30.00	27.1	25.00
10003HR-27L	31.00	28.1	26.00
10003HR-28L	32.00	29.1	27.00
10003HR-29L	33.00	30.1	28.00
10003HR-30L	34.00	31.1	29.00



PCB LAYOUT (10003HR-NNL)

PCB ASS'Y (10003HR-NNL)

### Specification

ITEM	SPEC
Voltage Rating	AC/DC 50V
Current Rating	AC/DC 0.5A
Operating Temperature	-25°C ~ +85°C
Contact Resistance	30mΩ MAX
Withstanding Voltage	AC500V/1min
Insulation Resistance	100MΩ MIN
Applicable Wire	-
Applicable P.C.B	0.8 ~ 1.6mm
Applicable FPC/FFC	0.30±0.03mm
Solder Height	0.15mm
Crimp Tensile Strength	-
UL FILE NO	-

# MERITEC

<http://www.meritec.co.kr>