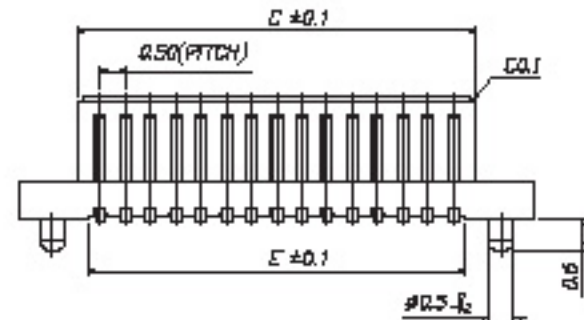
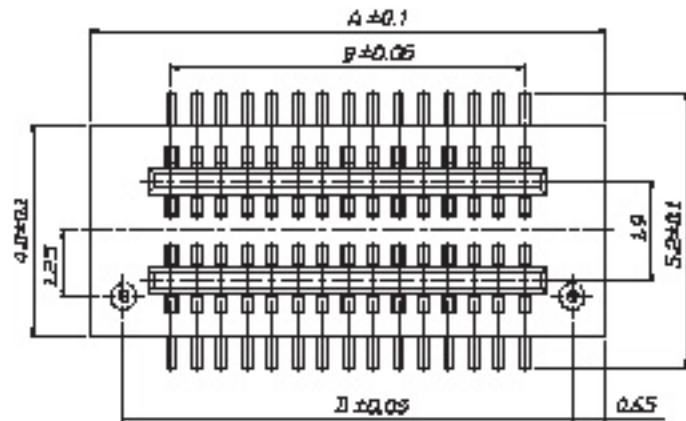
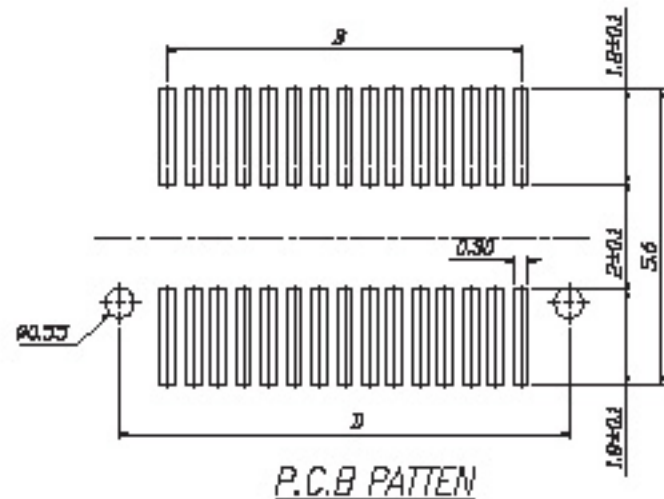
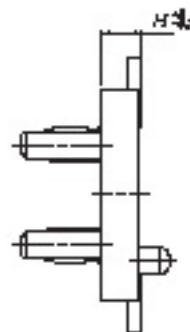


HIGH	PLUG	SOCKET
3.0	0.8	2.2
3.5	1.3	2.2
4.0	1.0	3.0
4.5	1.0	3.5
5.0	2.0	3.0
5.5	2.0	3.5
6.0	2.0	4.0
6.5	2.0	4.5



	A	B	C	D	E		A	B	C	D	E
10P	5.20	2.00	2.90	3.90	2.60	30P	11.70	8.60	9.40	10.40	9.00
12P	5.70	2.50	3.40	4.40	3.00	35P	12.20	9.00	9.80	10.80	9.50
14P	6.20	3.00	3.90	4.90	3.50	40P	12.70	9.50	10.40	11.40	10.00
16P	6.70	3.50	4.40	5.40	4.00	45P	13.20	10.00	10.80	11.80	10.50
18P	7.20	4.00	4.90	5.90	4.50	48P	13.70	10.50	11.40	12.40	11.00
20P	7.70	4.50	5.40	6.40	5.00	48P	14.20	11.00	11.80	12.80	11.50
22P	8.20	5.00	5.90	6.90	5.50	48P	14.70	11.50	12.40	13.40	12.00
24P	8.70	5.50	6.40	7.40	6.00	50P	15.20	12.00	12.80	13.90	12.50
26P	9.20	6.00	6.90	7.90	6.50	50P	15.70	12.50	13.40	14.40	13.00
28P	9.70	6.50	7.40	8.40	7.00	60P	22.70	20.40	20.80	21.40	20.00
30P	10.20	7.00	7.90	8.90	7.50	100P	27.70	25.40	25.80	26.40	25.00
32P	10.70	7.50	8.40	9.40	8.00						
34P	11.20	8.00	8.90	9.90	8.50						



MERITEC
<http://www.meritec.co.kr>

REV.	A	UNIT	MM	SCALE	1=1

GENERAL TOLERANCE		DRAWN
±	±	CHECK
±	±	APPROVE
±	± 0.15	
±	± 0.10	

DATE

DWG. NO.

DATE

TITLE
0.5mm PLUG BOARD TO BOARD
LWBS-XXC-XXH