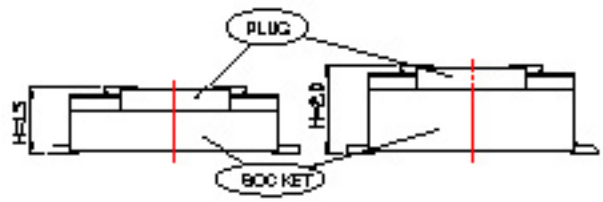


Socket and Plug are mated



RECOMMENDED P.C.B. PATTERN DIM.

100	LWBP05-100C-H1.25	28.00	24.50	27.20
90	LWBP05-090C-H1.25	25.50	22.00	24.70
80	LWBP05-080C-H1.25	23.00	19.50	22.20
70	LWBP05-070C-H1.25	20.50	17.00	19.70
60	LWBP05-060C-H1.25	18.00	14.50	17.20
50	LWBP05-050C-H1.25	15.50	12.00	14.70
40	LWBP05-040C-H1.25	13.00	9.50	12.20
34	LWBP05-034C-H1.25	11.50	8.00	10.70
32	LWBP05-032C-H1.25	11.00	7.50	10.20
30	LWBP05-030C-H1.25	10.50	7.00	9.70
28	LWBP05-028C-H1.25	10.00	6.50	9.20
26	LWBP05-026C-H1.25	9.50	6.00	8.70
24	LWBP05-024C-H1.25	9.00	5.50	8.20
22	LWBP05-022C-H1.25	8.50	5.00	7.70
20	LWBP05-020C-H1.25	8.00	4.50	7.20
18	LWBP05-018C-H1.25	7.50	4.00	6.70
16	LWBP05-016C-H1.25	7.00	3.50	6.20
14	LWBP05-014C-H1.25	6.50	3.00	5.70
12	LWBP05-012C-H1.25	6.00	2.50	5.20
10	LWBP05-010C-H1.25	5.50	2.00	4.70

H=2.0	SOCKET	1.85
	PLUG	1.25
H=1.5	SOCKET	1.85
	PLUG	1.25
STACKING HEIGHT	NAME	H

CKT	ENG. NO	A	B	C
2	TERMINAL	LWBP05-XXPT	PHOSPHOR BRONZE	A: Plating over Black
1	HOUSING	LWBP05-XXPH	LCP(UL94V-0)	NATURAL COLOR
NO	DESCRIPTION	ENG. NO	MATERIAL	REMARK

**MERITEC**  
http://www.meritec.co.kr

REV.	A	UNIT	MM	SCALE	1=1	GENERAL TOLERANCE	DRAWN	DATE	ENG. NO.	TITLE
						±0.1	CHECK			0.5mm SOCKET BOARD TO BOARD
						±0.15	APPROVE		PART NO.	
						±0.10			LWBS05-XXC-XXH	